

923 Tape Controlled Carriage

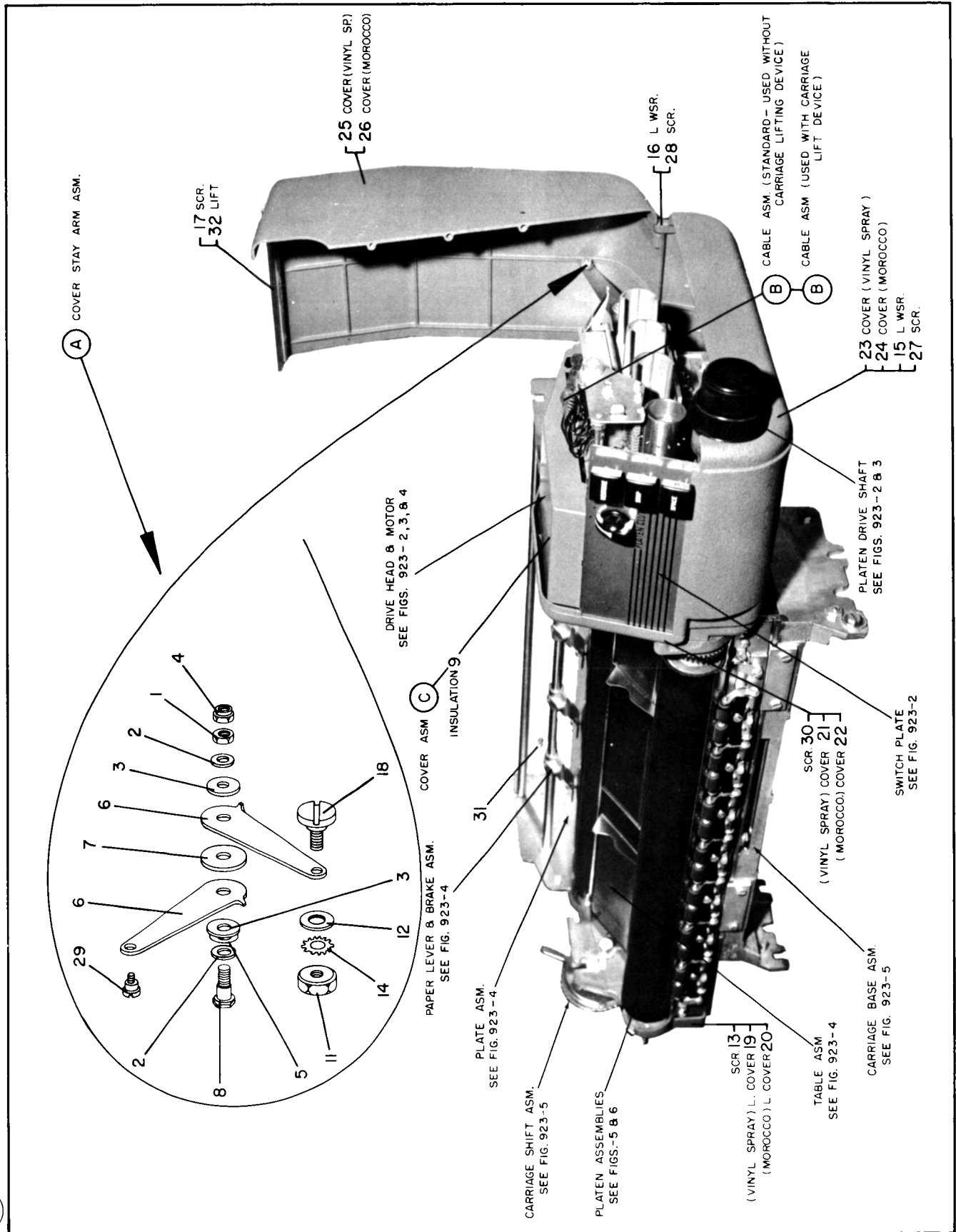


923 Tape Controlled Carriage

All assemblies are identified by an alphabetical character enclosed in a circle. The component parts of the assembly are indicated by a reference no. When an assembly is listed, for example B, all parts that are listed between B and C are component parts of B.

REF.	PART NO.	DESCRIPTION	REF.	PART NO.	DESCRIPTION	REF.	PART NO.	DESCRIPTION
A	218810	ARM ASM - COVER STAY	9	220557	INSULATION	19	122507	COVER - LEFT (VINYL SPRAY)
1	11598	NUT - STAY ARM PIVOT				20	212301	COVER - LEFT (MOROCCO)
2	23141	WASHER - SMALL				21	122513	COVER - INSIDE BELL (VINYL SPRAY)
3	24091	WASHER - LARGE				22	221022	COVER - INSIDE BELL (MOROCCO)
4	125930	NUT - STAY ARM LOCK			PARTS NOT INCLUDED WITH ASSEMBLIES	23	122517	COVER - BOTTOM (VINYL SPRAY)
5	151200	SHIM - STAY ARM ADJUSTING				24	221023	COVER - BOTTOM (MOROCCO)
6	218811	ARM - COVER STAY	11	2999	NUT - STAY ARM PIVOT	25	122524	COVER - TOP (VINYL SPRAY)
7	218812	WASHER - FRICTION	12	22478	WASHER - STAY ARM PIVOT	26	221024	COVER - TOP (MOROCCO)
8	218813	STUD - PIVOT	13	28413	SCREW - LEFT END COVER	27	140425	SCREW - COVER MOUNTING
			14	55901	LOCKWASHER - STAY ARM	28	160044	SCREW - COVER PIVOT
B	221016	CABLE ASM - STANDARD (SEE BELOW NOTE)	15	55901	LOCKWASHER - BELL COVER	29	160409	SCREW - COVER STAY ARM
B	230707	CABLE ASM - (USED WITH LIFT, DEVISE)	16	60646	LOCKWASHER - COVER PIVOT STUD	30	186759	SCREW - BELL COVER
			17	75533	SCREW - COVER LIFT	31	196698	SCREW - LEFT END COVER
C	220568	COVER ASM - DRIVE AUXILIARY	18	113298	STUD - STAY ARM PIVOT	32	221020	LIFT - DRIVE COVER

COVER VIEW



FEB 14, 1958

FIG. 923-I

REF. PART NO.	DESCRIPTION	REF. PART NO.	DESCRIPTION	REF. PART NO.	DESCRIPTION
A	255595 FRAME ASM - BRUSH HOLDER & 3500 SCREW - BRUSH GUIDE BLOCK 20038 WASHER - BRUSH BLOCK MTG 38271 SCREW - BRUSH BLOCK MTG 5 94378 LOCKWASHER - BRUSH GUIDE 6 189520 SPRING - LATCH 7 197690 FRAME - BRUSH HOLDER 8 197698 BLOCK - BRUSH GUIDE 9 221186 STUD - LATCH SPRING 10 257701 CLIP - LATCH SHAFT SPRING A1 197695 ARM ASM - LATCH RELEASE A2 221182 LATCH ASM - BRUSH HOLDER A3 154404 HOLDER ASM - BRUSH 12 257261 SCREW - CLAMPING A3A 197894 BRUSH ASSEMBLY	N	197483 ARM ASM - CLUTCH SHIFT P 197850 MAGNET ASM - DRIVE Q 218512 STUD ASM - ARMATURE STOP R 197832 HOUSING ASM - SHAFT BEARING S 219981 GEAR ASM - PLATEN KNOB & 20 221988 SCREW - CLAMPING T 219983 SHAFT ASM - PLATEN DRIVE GEAR & U 221026 PLATE ASM - SWITCH V 197351 KNOB ASM - NEW STYLE 197831 KNOB ASM - OLD STYLE (SEE DWG. NOTE) V PARTS NOT INCLUDED WITH ASSEMBLIES	48 123639 SCREW - PLATEN DIAL 49 121521 SCREW - SPRING COLLAR SET 50 121935 STRIP - INSULATOR 51 122714 CLAMP - MAGNET WIRE 52 130534 SPRING - DETENT LEVER 53 140425 SPRING - AUX COVER BRACKET 54 141071 SPRING - FORKED LEVER 55 141812 KING - PINION PIN LOCK 56 141815 HOUSING - VERNIER PINION 57 143009 COLLAR - BRUSH HOLDER PIVOT 58 SCREW - SET 59 173202 SCREW - TERMINAL BLOCK 60 196299 SCREW - BEARING RETAINER 61 197851 LEVER - TAPE GUIDE 62 197857 SPRING - TAPE GUIDE LEVER 63 197678 STUD - DETENT LEVER 64 197681 BEARING - MAIN SHAFT 65 197704 BRACKET - DRIVE MAGNET 66 197747 KNOB - VERNIER PINION 67 197749 COLLAR - VERNIER SPRING 68 197760 STOP - PLATEN DETENT LEVER 69 197761 STOP - BRUSH HOLDER 70 GUIDE - TAPE 71 197765 KEEPER - TAPE GUIDE 72 197838 SPRING - PLATEN KNOB 73 147888 HUB - BRUSH HOLDER SPRING 74 212492 BLOCK - TERMINAL 75 212491 CAM - CB 76 PIN - VERNIER PINION PIVOT 77 219986 SCREW - BRUSH HOLDER HUB 78 189136 SWITCH - CONTROL (NORMALLY OPEN) 79 220559 STOP - TAPE GUIDE LEVER 80 197352 PLATE - SWITCH MOUNTING 81 221175 PINION - VERNIER 82 221018 BRACKET - CARRIAGE 83 221019 BRACKET - VERNIER 84 221179 SPRING - COVER 85 221228 STOP - ADJUSTABLE 86 249412 STUD - BRUSH HOLDER PIVOT 87 249413 SPACER - BRUSH HOLDER 88 249414 SPRING - BRUSH HOLDER 89 112055 SCREW - PLATEN CLUTCH DIAL	
B	255587 COMMUTATOR 14 SCREW - SET 15 PIN - TAPE FEED 16 WASHER - PIN RETAINER	23 221 24 327 25 345 26 2031 27 2300 28 2800 29 2809 30 2809 31 4236 32 9032 33 11598 34 22066 35 22074 36 22587 37 25625 38 38383 39 49095 40 52607 41 55901 42 56121 43 56722 44 110775 45 83417 46 110775 47	NUT - BRUSH HOLDER PIVOT SCREW - BEARING HOUSING SCREW - TB MOUNTING SCREW - TAPE GUIDE SCREW - TAPE GUIDE MOUNTING NUT - BRUSH HOLDER STOP NUT - MAGNET SCREW SCREW - ARM ADJUSTING STOP LOCKWASHER - PIVOT STUD NUT - ARMATURE STOP WASHER - ARMATURE ADJ STOP SCREW - DETENT LEVER PIVOT STUD - DETENT LEVER SPRING SCREW - BEARING MOUNTING SCREW - BRACKET MOUNTING STUD - TAPER GUIDE LEVER SCREW - DRIVE MAGNET LOCKWASHER - CB MOUNTING LOCKWASHER - MAGNET BRACKET LOCKWASHER - MAGNET MTG SCREW - COVER BRKT ASM MTG SCREW - MAGNET ADJUSTING SCREW - SWITCH PLATE		
C	212492 CIRCUIT BREAKER ASM	23 221 24 327 25 345 26 2031 27 2300 28 2800 29 2809 30 2809 31 4236 32 9032 33 11598 34 22066 35 22074 36 22587 37 25625 38 38383 39 49095 40 52607 41 55901 42 56121 43 56722 44 110775 45 83417 46 110775 47	NUT - BRUSH HOLDER PIVOT SCREW - BEARING HOUSING SCREW - TB MOUNTING SCREW - TAPE GUIDE SCREW - TAPE GUIDE MOUNTING NUT - BRUSH HOLDER STOP NUT - MAGNET SCREW SCREW - ARM ADJUSTING STOP LOCKWASHER - PIVOT STUD NUT - ARMATURE STOP WASHER - ARMATURE ADJ STOP SCREW - DETENT LEVER PIVOT STUD - DETENT LEVER SPRING SCREW - BEARING MOUNTING SCREW - BRACKET MOUNTING STUD - TAPER GUIDE LEVER SCREW - DRIVE MAGNET LOCKWASHER - CB MOUNTING LOCKWASHER - MAGNET BRACKET LOCKWASHER - MAGNET MTG SCREW - COVER BRKT ASM MTG SCREW - MAGNET ADJUSTING SCREW - SWITCH PLATE		
D	197762 NUT ASM - PLATEN JAM 72670 SCREW - JAM NUT SET	23 221 24 327 25 345 26 2031 27 2300 28 2800 29 2809 30 2809 31 4236 32 9032 33 11598 34 22066 35 22074 36 22587 37 25625 38 38383 39 49095 40 52607 41 55901 42 56121 43 56722 44 110775 45 83417 46 110775 47	NUT - BRUSH HOLDER PIVOT SCREW - BEARING HOUSING SCREW - TB MOUNTING SCREW - TAPE GUIDE SCREW - TAPE GUIDE MOUNTING NUT - BRUSH HOLDER STOP NUT - MAGNET SCREW SCREW - ARM ADJUSTING STOP LOCKWASHER - PIVOT STUD NUT - ARMATURE STOP WASHER - ARMATURE ADJ STOP SCREW - DETENT LEVER PIVOT STUD - DETENT LEVER SPRING SCREW - BEARING MOUNTING SCREW - BRACKET MOUNTING STUD - TAPER GUIDE LEVER SCREW - DRIVE MAGNET LOCKWASHER - CB MOUNTING LOCKWASHER - MAGNET BRACKET LOCKWASHER - MAGNET MTG SCREW - COVER BRKT ASM MTG SCREW - MAGNET ADJUSTING SCREW - SWITCH PLATE		
E	197786 SHAFT ASM - PLATEN CLUTCH	23 221 24 327 25 345 26 2031 27 2300 28 2800 29 2809 30 2809 31 4236 32 9032 33 11598 34 22066 35 22074 36 22587 37 25625 38 38383 39 49095 40 52607 41 55901 42 56121 43 56722 44 110775 45 83417 46 110775 47	NUT - BRUSH HOLDER PIVOT SCREW - BEARING HOUSING SCREW - TB MOUNTING SCREW - TAPE GUIDE SCREW - TAPE GUIDE MOUNTING NUT - BRUSH HOLDER STOP NUT - MAGNET SCREW SCREW - ARM ADJUSTING STOP LOCKWASHER - PIVOT STUD NUT - ARMATURE STOP WASHER - ARMATURE ADJ STOP SCREW - DETENT LEVER PIVOT STUD - DETENT LEVER SPRING SCREW - BEARING MOUNTING SCREW - BRACKET MOUNTING STUD - TAPER GUIDE LEVER SCREW - DRIVE MAGNET LOCKWASHER - CB MOUNTING LOCKWASHER - MAGNET BRACKET LOCKWASHER - MAGNET MTG SCREW - COVER BRKT ASM MTG SCREW - MAGNET ADJUSTING SCREW - SWITCH PLATE		
F	197687 BEARING ASM - HOUSING &	23 221 24 327 25 345 26 2031 27 2300 28 2800 29 2809 30 2809 31 4236 32 9032 33 11598 34 22066 35 22074 36 22587 37 25625 38 38383 39 49095 40 52607 41 55901 42 56121 43 56722 44 110775 45 83417 46 110775 47	NUT - BRUSH HOLDER PIVOT SCREW - BEARING HOUSING SCREW - TB MOUNTING SCREW - TAPE GUIDE SCREW - TAPE GUIDE MOUNTING NUT - BRUSH HOLDER STOP NUT - MAGNET SCREW SCREW - ARM ADJUSTING STOP LOCKWASHER - PIVOT STUD NUT - ARMATURE STOP WASHER - ARMATURE ADJ STOP SCREW - DETENT LEVER PIVOT STUD - DETENT LEVER SPRING SCREW - BEARING MOUNTING SCREW - BRACKET MOUNTING STUD - TAPER GUIDE LEVER SCREW - DRIVE MAGNET LOCKWASHER - CB MOUNTING LOCKWASHER - MAGNET BRACKET LOCKWASHER - MAGNET MTG SCREW - COVER BRKT ASM MTG SCREW - MAGNET ADJUSTING SCREW - SWITCH PLATE		
G	197750 LEVER ASM - FORKED DETENT	23 221 24 327 25 345 26 2031 27 2300 28 2800 29 2809 30 2809 31 4236 32 9032 33 11598 34 22066 35 22074 36 22587 37 25625 38 38383 39 49095 40 52607 41 55901 42 56121 43 56722 44 110775 45 83417 46 110775 47	NUT - BRUSH HOLDER PIVOT SCREW - BEARING HOUSING SCREW - TB MOUNTING SCREW - TAPE GUIDE SCREW - TAPE GUIDE MOUNTING NUT - BRUSH HOLDER STOP NUT - MAGNET SCREW SCREW - ARM ADJUSTING STOP LOCKWASHER - PIVOT STUD NUT - ARMATURE STOP WASHER - ARMATURE ADJ STOP SCREW - DETENT LEVER PIVOT STUD - DETENT LEVER SPRING SCREW - BEARING MOUNTING SCREW - BRACKET MOUNTING STUD - TAPER GUIDE LEVER SCREW - DRIVE MAGNET LOCKWASHER - CB MOUNTING LOCKWASHER - MAGNET BRACKET LOCKWASHER - MAGNET MTG SCREW - COVER BRKT ASM MTG SCREW - MAGNET ADJUSTING SCREW - SWITCH PLATE		
H	197753 LEVER ASM - DETENT	23 221 24 327 25 345 26 2031 27 2300 28 2800 29 2809 30 2809 31 4236 32 9032 33 11598 34 22066 35 22074 36 22587 37 25625 38 38383 39 49095 40 52607 41 55901 42 56121 43 56722 44 110775 45 83417 46 110775 47	NUT - BRUSH HOLDER PIVOT SCREW - BEARING HOUSING SCREW - TB MOUNTING SCREW - TAPE GUIDE SCREW - TAPE GUIDE MOUNTING NUT - BRUSH HOLDER STOP NUT - MAGNET SCREW SCREW - ARM ADJUSTING STOP LOCKWASHER - PIVOT STUD NUT - ARMATURE STOP WASHER - ARMATURE ADJ STOP SCREW - DETENT LEVER PIVOT STUD - DETENT LEVER SPRING SCREW - BEARING MOUNTING SCREW - BRACKET MOUNTING STUD - TAPER GUIDE LEVER SCREW - DRIVE MAGNET LOCKWASHER - CB MOUNTING LOCKWASHER - MAGNET BRACKET LOCKWASHER - MAGNET MTG SCREW - COVER BRKT ASM MTG SCREW - MAGNET ADJUSTING SCREW - SWITCH PLATE		
J	197745 KNOB ASM - PLATEN	23 221 24 327 25 345 26 2031 27 2300 28 2800 29 2809 30 2809 31 4236 32 9032 33 11598 34 22066 35 22074 36 22587 37 25625 38 38383 39 49095 40 52607 41 55901 42 56121 43 56722 44 110775 45 83417 46 110775 47	NUT - BRUSH HOLDER PIVOT SCREW - BEARING HOUSING SCREW - TB MOUNTING SCREW - TAPE GUIDE SCREW - TAPE GUIDE MOUNTING NUT - BRUSH HOLDER STOP NUT - MAGNET SCREW SCREW - ARM ADJUSTING STOP LOCKWASHER - PIVOT STUD NUT - ARMATURE STOP WASHER - ARMATURE ADJ STOP SCREW - DETENT LEVER PIVOT STUD - DETENT LEVER SPRING SCREW - BEARING MOUNTING SCREW - BRACKET MOUNTING STUD - TAPER GUIDE LEVER SCREW - DRIVE MAGNET LOCKWASHER - CB MOUNTING LOCKWASHER - MAGNET BRACKET LOCKWASHER - MAGNET MTG SCREW - COVER BRKT ASM MTG SCREW - MAGNET ADJUSTING SCREW - SWITCH PLATE		
K	197811 KNOB ASM - SPACE CONTROL SWITCH	23 221 24 327 25 345 26 2031 27 2300 28 2800 29 2809 30 2809 31 4236 32 9032 33 11598 34 22066 35 22074 36 22587 37 25625 38 38383 39 49095 40 52607 41 55901 42 56121 43 56722 44 110775 45 83417 46 110775 47	NUT - BRUSH HOLDER PIVOT SCREW - BEARING HOUSING SCREW - TB MOUNTING SCREW - TAPE GUIDE SCREW - TAPE GUIDE MOUNTING NUT - BRUSH HOLDER STOP NUT - MAGNET SCREW SCREW - ARM ADJUSTING STOP LOCKWASHER - PIVOT STUD NUT - ARMATURE STOP WASHER - ARMATURE ADJ STOP SCREW - DETENT LEVER PIVOT STUD - DETENT LEVER SPRING SCREW - BEARING MOUNTING SCREW - BRACKET MOUNTING STUD - TAPER GUIDE LEVER SCREW - DRIVE MAGNET LOCKWASHER - CB MOUNTING LOCKWASHER - MAGNET BRACKET LOCKWASHER - MAGNET MTG SCREW - COVER BRKT ASM MTG SCREW - MAGNET ADJUSTING SCREW - SWITCH PLATE		
L	197814 KNOB ASM - STOP SWITCH	23 221 24 327 25 345 26 2031 27 2300 28 2800 29 2809 30 2809 31 4236 32 9032 33 11598 34 22066 35 22074 36 22587 37 25625 38 38383 39 49095 40 52607 41 55901 42 56121 43 56722 44 110775 45 83417 46 110775 47	NUT - BRUSH HOLDER PIVOT SCREW - BEARING HOUSING SCREW - TB MOUNTING SCREW - TAPE GUIDE SCREW - TAPE GUIDE MOUNTING NUT - BRUSH HOLDER STOP NUT - MAGNET SCREW SCREW - ARM ADJUSTING STOP LOCKWASHER - PIVOT STUD NUT - ARMATURE STOP WASHER - ARMATURE ADJ STOP SCREW - DETENT LEVER PIVOT STUD - DETENT LEVER SPRING SCREW - BEARING MOUNTING SCREW - BRACKET MOUNTING STUD - TAPER GUIDE LEVER SCREW - DRIVE MAGNET LOCKWASHER - CB MOUNTING LOCKWASHER - MAGNET BRACKET LOCKWASHER - MAGNET MTG SCREW - COVER BRKT ASM MTG SCREW - MAGNET ADJUSTING SCREW - SWITCH PLATE		
M	197816 KNOB ASM - RESTORE	23 221 24 327 25 345 26 2031 27 2300 28 2800 29 2809 30 2809 31 4236 32 9032 33 11598 34 22066 35 22074 36 22587 37 25625 38 38383 39 49095 40 52607 41 55901 42 56121 43 56722 44 110775 45 83417 46 110775 47	NUT - BRUSH HOLDER PIVOT SCREW - BEARING HOUSING SCREW - TB MOUNTING SCREW - TAPE GUIDE SCREW - TAPE GUIDE MOUNTING NUT - BRUSH HOLDER STOP NUT - MAGNET SCREW SCREW - ARM ADJUSTING STOP LOCKWASHER - PIVOT STUD NUT - ARMATURE STOP WASHER - ARMATURE ADJ STOP SCREW - DETENT LEVER PIVOT STUD - DETENT LEVER SPRING SCREW - BEARING MOUNTING SCREW - BRACKET MOUNTING STUD - TAPER GUIDE LEVER SCREW - DRIVE MAGNET LOCKWASHER - CB MOUNTING LOCKWASHER - MAGNET BRACKET LOCKWASHER - MAGNET MTG SCREW - COVER BRKT ASM MTG SCREW - MAGNET ADJUSTING SCREW - SWITCH PLATE		

RIGHT SIDE FRAME & SWITCH PLATE ASM

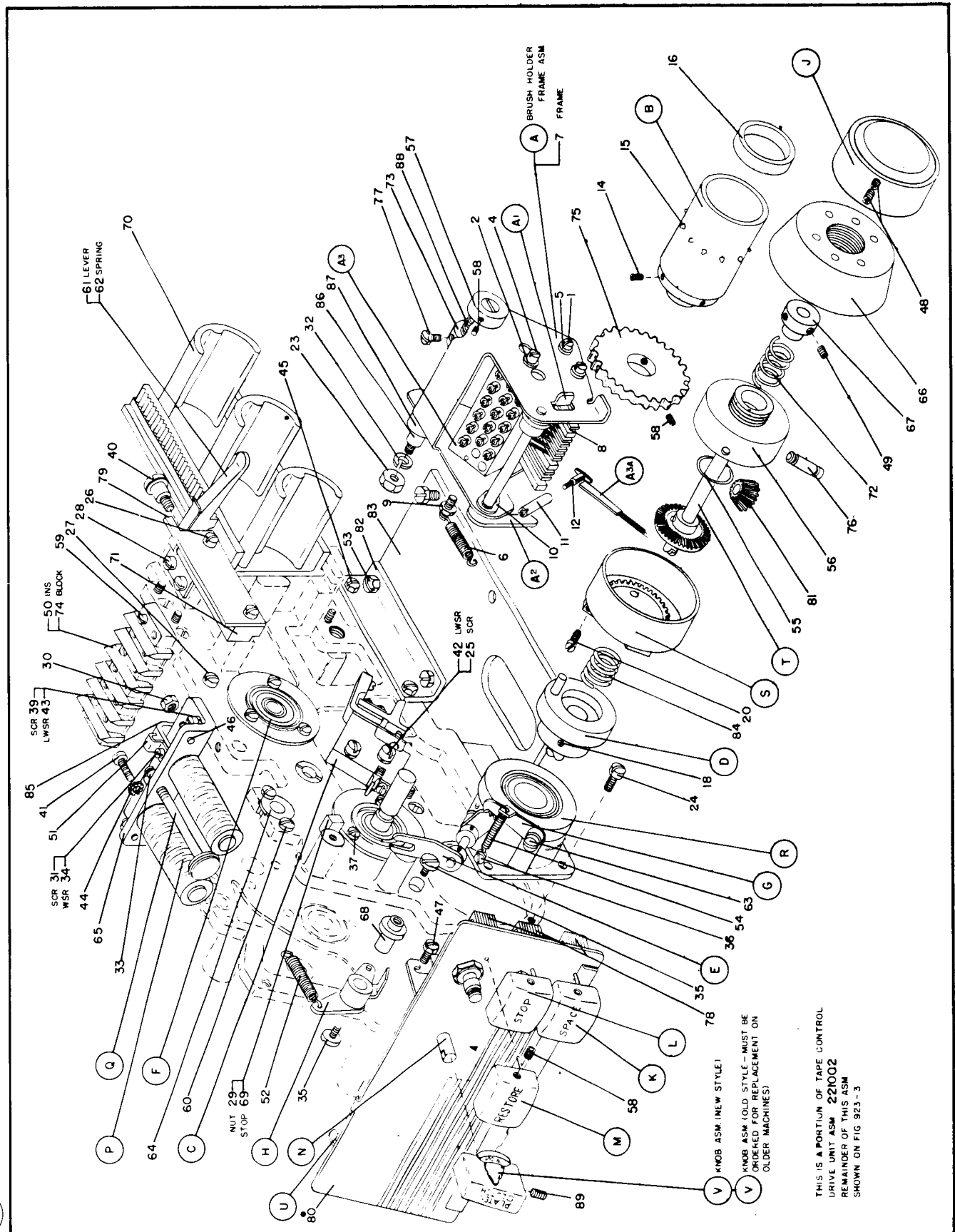


FIG. 923-2

FIG. 923-3

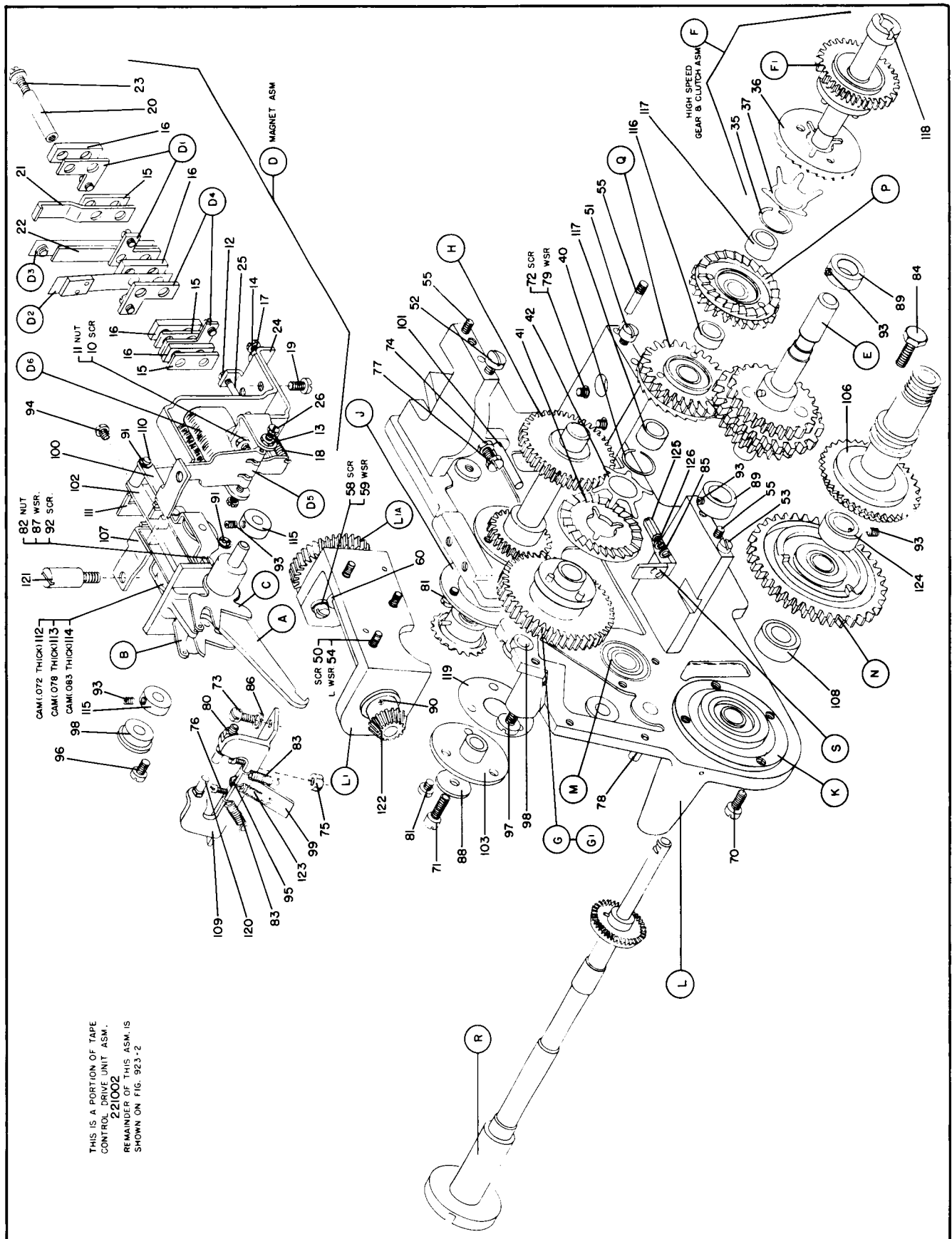
FEB. 14, 1958

REF.	PART NO.	DESCRIPTION	REF.	PART NO.	DESCRIPTION	REF.	PART NO.	DESCRIPTION
A	197901	SHAFT ASM - DRIVE ARMATURE	H	197776	SHAFT ASM - CLUTCH DRIVE	79	22478	WASHER - MAGNET MOUNTING
B	197823	ARM ASM - LEFT CLUTCH ENGAGING	J	197687	BEARING ASM - SHAFT	80	23815	NUT - ECCENTRIC STUD
C	197817	ARM ASM - RIGHT CLUTCH ENGAGING	K	219910	HOUSING ASM - DRIVE SHAFT BEARING	81	25625	SCREW - SHAFT BEARING MOUNTING
D	197713	MAGNET ASM - INTERPOSER	L	216538	FRAME ASSEMBLY - DRIVE	82	27073	NUT - CLUTCH CAM BRACKET
10	2032	SCREW - ARM PIVOT SUPPT POSITIONING	50	232	SCREW - WORM SHAFT BRACKET	83	27895	SPRING - ENGAGING ARM ASM
11	6503	NUT - ARM PIVOT SUPPT POSITIONING	51	15965	SCREW - MAGNET MTG PLATE	84	38688	SCREW - DRIVE ASM MOUNTING
12	7341	NUT - ARMATURE STOP	52	15965	SCREW - UPPER TIE BAR	85	62031	LOCKWASHER - DETENT WHEEL
13	7341	NUT - ARMATURE PIVOT	53	22568	SCREW - SIDE PLATE TIE BAR	86	94378	LOCKWASHER - TERMINAL SCREW
14	9685	SCREW - ADJUSTING	54	56079	LOCKWASHER - WORM SHAFT BRKT	87	105047	WASHER - CLUTCH CAM BRACKET
15	11899	BLOCK - CONTACT INSULATION	55	216537	PIN - THREADED TAPER	88	110029	WASHER - CLUTCH SHIFT RETAINING
16	11900	BLOCK - CONTACT INSULATION	L1	216596	BRACKET ASM - WORM WHEEL SHAFT	89	110156	COLLAR - COMMUTATOR SHAFT
17	23815	NUT - ADJUSTING SCREW	58	3500	SCREW - BEARING MOUNTING	90	121521	SCREW - BEVEL GEAR SET
18	27895	SCREW - ARMATURE ASM	59	79233	WASHER - BEARING MOUNTING	91	147297	CLIP - ARMATURE SPRING
19	38364	SCREW - MAGNET ASM MOUNTING	60	156364	BEARING - WORM SHAFT	92	151533	SCREW - CLUTCH CAM BRACKET
20	100397	TUBE - CONTACT INSULATION SCREW	L1A	288282	SHAFT ASM - WORM WHEEL	93	165556	SCREW - SET
21	117650	SUPPORT - CONTACT SPRING	M	212168	HOUSING ASM - BEARING	94	186636	SCREW - DETENT SPRING
22	166735	SCREW - CONTACT MOUNTING	N	197683	GEAR ASM - PLATEN DRIVE	95	186636	SCREW - ARMATURE SHAFT BEARING
23	173213	STOP - CONTACT SPRING	P	197861	GEAR ASM - DRIVE CLUTCH	96	196299	SCREW - DRIVE UNIT
24	197706	SUPPORT - ARM PIVOT	Q	197870	GEAR ASM - CLUTCH DRIVE	97	197681	BUSHING - ARMATURE SHAFT
25	197808	STOP - MAGNET	R	219983	GEAR ASM - PLATEN DRIVE SHAFT	98	197686	SPRING - DRIVE DETENT
26	197838	PIVOT - SHAFT	S	197827	DETENT ASM - WHEEL STOP SPRING	99	197705	INTERPOSER - HIGH SPEED
D1	1882	TERMINAL ASM - CONTACT				100	197705	INTERPOSER - LOW SPEED
D2	116547	SPRING ASM - CONTACT				101	197707	ROD - CONTACT PUSH
D3	116550	SPRING ASM - CONTACT				102	197708	INTERPOSER - CLUTCH SHAFT
D4	138709	TERMINAL ASM - CONTACT				103	197710	DETENT - PLATEN
D5	197841	ARMATURE ASM - INTERPOSER				106	197757	GUIDE - CLUTCH DISC ARM
D6	197851	COIL ASM - INTERPOSER MAGNET				107	197773	SPACER - PLATEN DRIVE SHAFT
E	221260	GEAR ASM - CAM SHAFT DRIVE				108	197785	TERMINAL - ARMATURE SPRING
F	197766	GEAR ASM - HIGH SPEED CLUTCH &				109	197802	PIVOT - ARMATURE UPPER
35	197875	RING - CLUTCH SPRING SNAP				110	197842	PLATE - INTERLOCK
36	197876	CLUTCH - RIGHT DRIVE				111	197846	CAM - CLUTCH ENGAGING
37	197878	SPRING - CLUTCH				112	197847	CAM - CLUTCH ENGAGING
F1	197874	GEAR ASM - DRIVE CLUTCH				113	197848	CAM - CLUTCH ENGAGING
G	197767	GEAR ASM - LOW SPEED CLUTCH &				114	197849	CAM - CLUTCH ENGAGING
40	197875	RING - CLUTCH SPRING SNAP				115	197853	SPACER - ARMATURE SHAFT SHORT
41	197877	CLUTCH - LEFT DRIVE				116	197858	SPACER - CLUTCH SHAFT LONG
42	197878	SPRING - CLUTCH				117	197859	SHIM - CLUTCH SHAFT LONG
G1	197879	GEAR ASM - LOW SPEED DRIVE				118	197866	SHIM - CLUTCH SHAFT BEARING
						119	216506	STUD - ENGAGING ARM ECCENTRIC
						120	216533	STUD - ARMATURE
						121	216540	GEAR - BEVEL PINION
						122	216599	SPRING - PLATEN DRIVE SHAFT
						123	221113	COLLAR - PLATEN DRIVE SHAFT
						124	221181	SCREW - DETENT STOP SPRING
						125	221183	SCREW - DETENT STOP SPRING
						126	22066	WASHER - DETENT STOP SPRING

PARTS NOT INCLUDED WITH ASSEMBLIES

70	337	SCREW - PLATEN DRIVE SHAFT HOUSING
71	845	SCREW - CLUTCH SHAFT RETAINING
72	845	SCREW - MAGNET RETAINING
73	2629	SCREW - MAGNETURE SPRING
74	7341	NUT - CLUTCH ENGAGING ARM SCREW
75	7341	NUT - MAGNET ARM STOP
76	11166	SCREW - PLATEN ASM STOP
77	11166	SCREW - CLUTCH ENGAGING ARM STOP
78	15211	PIN - SWITCH PLATE MOUNTING

DRIVE UNIT ASM-LEFT SIDE VIEW



FEB 14, 1958

FIG. 923-3

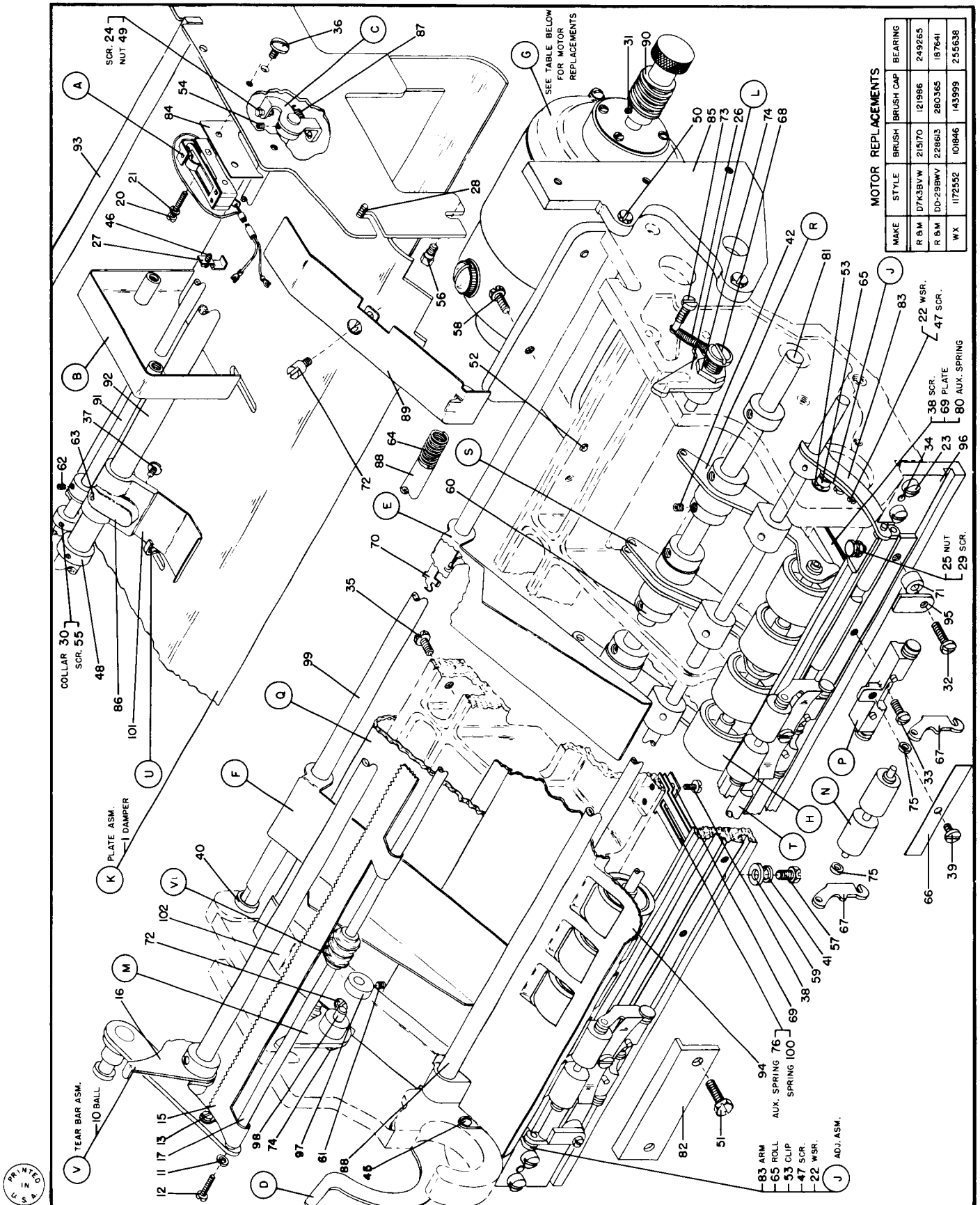
PAGE 7

FIG. 923-4

FEB. 14, 1958

REF.	PART NO.	DESCRIPTION	REF.	PART NO.	DESCRIPTION	REF.	PART NO.	DESCRIPTION
A	221174	SWITCH ASM - FORM CONTROL STOP	13	197952	SCREW - TEAR BAR	56	139907	SCREW - RIGHT SIDE PLATE
B	122508	HOUSING ASM - SWITCH (VINYL SPRAY)	15	212233	BAR - TEAR	57	140425	SCREW - CARRIAGE FRAME STOP
B	216569	HOUSING ASM - SWITCH (MORROCO)	16	212553	LEVER - TEAR BAR ADJUSTING	58	140425	WASHER - MOTOR MOUNTING
C	216570	ARM ASM - SWITCH ACTUATING	17	215777	SHAFT - PAPER TEAR BAR	59	140778	WASHER - CARRIAGE FRAME STOP
D	212218	SHAFT ASM - PRESSURE ROLL CAM	V1	197566	ROLL ASSEMBLY	60	143009	COLLAR - PRESSURE ROLL ARM SHAFT
E	216574	GUIDE ASM - RIGHT SIDE PAPER			PARTS NOT INCLUDED WITH ASSEMBLIES	61	165556	SCREW - TEAR BAR ECCENTRIC SET
F	216575	GUIDE ASM - LEFT SIDE PAPER	20	577	SCREW - SWITCH ASM MOUNTING	62	165556	SCREW - PAPER LEVER SET
G	216563	MOTOR ASM - 45V DC - 1/50 HP	21	1866	WASHER - ADJUST ASSEMBLY	63	173937	SCREW - BRAKE SHOE ASM
H	237439	ROLL ASM - PRESSURE	22	1866	WASHER - ADJUST ASSEMBLY	64	183628	SPRING - PAPER ENTRANCE BAR
J	212476	ADJUSTER ASM - FRONT PRESSURE ROLL	23	2994	SCREW - CARRIAGE TIE BAR	65	197509	ROLL - FRONT PRESSURE RELEASE ARM
K	220585	PLATE ASM - PAPER GUIDE & SIDE	24	3828	SCREW - ACTUATING ARM ADJUSTING	66	197519	SPRING - FRONT PRESSURE ROLL
K	220593	DAMPER - FELT	25	6503	NUT - PAPER TABLE SUPPORT	67	197520	ARM - FRONT PRESSURE ROLL
L	197527	LATCH ASM - RIGHT PIN FEED	26	6936	SPRING - PIN FEED LATCH	68	197532	PLATE - AUX SPRING STIFFENER
M	197530	LATCH ASM - LEFT PIN FEED	27	9755	CLAMP - CABLE	69	197532	SPRING - PAPER SIDE GUIDE
N	237442	ROLL ASM - FRONT PRESSURE	28	10598	SCREW - GUIDE & SIDE PLATE	70	197547	SPACER - FRONT PAPER GUIDE SUPPT
P	197518	SUPPORT ASM - FRONT PRESSURE ROLL	29	10993	SCREW - PAPER TABLE SUPPORT	71	197548	STUD - COVER MOUNTING
Q	221191	TABLE ASM - PAPER FRONT	30	15677	COLLAR - PAPER LEVER SHAFT	72	197553	STUD - PIN FEED LATCH SPRING
R	197523	ARM ASM - RIGHT PRESSURE ROLL	31	22797	SCREW - WORM GEAR SET	73	197555	NUT - LATCH STUD LOCK
S	197524	ARM ASM - LEFT PRESSURE ROLL	32	23362	SCREW - RELEASE ARM SPRING	74	197562	LUBRICATOR - PRESSURE ROLL PIN
T	212251	BAR ASM - PRESSURE RELEASE	33	24020	SCREW - FRONT PRESSURE ROLL	75	197611	SPRING - PRESS ROLL AUX (6 USED)
U	212345	LEVER ASM - PAPER	34	25643	PIN - CARRIAGE TIE BAR	76	197620	SPRING - PRESS ROLL AUX (2 USED)
V	221531	BAR ASM - ADJUSTABLE TEAR	35	25747	SCREW - PAPER GUIDE	81	212212	SHAFT - PRESSURE ROLL ARM
	81140	BALL - DETENT	36	28607	SCREW - SWITCH HOUSING	82	212245	CLAMP - CARRIAGE BAR
	163899	LOCKWASHER - TEAR BAR	37	42003	SCREW - PAPER BRAKE SHOE	83	212253	ARM - FRONT PRESS ROLL RELEASE
12	197951	SCREW - TEAR BAR ROD	38	42026	SCREW - SPRING MOUNTING	84	212350	STRIP - PAPER SWITCH INSULATOR
			39	42026	SCREW - PRESSURE ROLL SPRING	85	216558	FRAME - MOTOR MOUNTING
			40	45709	SPACER - PAPER BRACKET TIE ROD	86	216560	HOLDER - PAPER BRAKE SHOE
			41	56121	LOCKWASHER - CARRIAGE FORM STOP SCR	87	219765	SPRING - SPRING ACTUATING ARM ASM
			42	75533	SCREW - ROLL ARM	88	219915	BAR - PAPER ENTRANCE
			43	75792	SCREW - PAPER GUIDE MOUNTING	89	219918	COVER - RIGHT
			44	103895	SCREW - CABLE	90	220504	GEAR - WORM
			45	105234	SCREW - FRONT PRESSURE ROLL ADJ	91	220570	SHAFT - PAPER LEVER
			46	108568	COLLAR - PAPER BRAKE SHAFT	92	220571	SHAFT - PAPER BRAKE
			47	113380	NUT - ACTUATING ARM ADJUST SCREW	93	220586	ROD - PAPER ROLL
			48	120211	SCREW - MOTOR MOUNTING FRAME	94	220590	GUIDE - FRONT PAPER
			49	120211	SCREW - CARRIAGE BRACKET CLAMP	95	221031	HOLDER - PRESSURE ROLL RELEASE BAR
			50	120357	SCREW - SOCKET HEAD CAP	96	221268	BAR - FRONT CARRIAGE TIE
			51	123206	CLIP - PRESSURE ROLL RELEASE ARM	97	221559	ECCENTRIC - TEAR BAR ADJUSTING
			52	133798	SCREW - SWITCH ACTUATING ARM SET	98	221603	STUD - LEFT PIN FEED LATCH
			53			99	221622	ROD - PAPER BRACKET TIE
			54			100	221622	SPRING - REAR PRESSURE ROLL
			55			101	221942	SHOE - PAPER BRAKE
						102	257526	COVER - LEFT

PAPER GUIDE, TEAR BAR & PRESSURE ROLL ASMS.



FEB. 14, 1958

FIG. 923-4

REF.	PART NO.	DESCRIPTION	REF.	PART NO.	DESCRIPTION	REF.	PART NO.	DESCRIPTION
A	221224	PLATEN & BEARING ASM - SOFT	30	161351	WASHER - IDLER GEAR STUD	72	9092	LOCKWASHER - JONES PLUG MTG
A	221219	PLATEN & BEARING ASM - MEDIUM	31	197573	BLOCK - CARRIAGE SLIDE	73	9458	SCREW - SHIFT HANDWHEEL MTG
A	221225	PLATEN & BEARING ASM - HARD	32	212300	SCREW - ADJUSTING BLOCK LOWER	74	10598	SCREW - GUIDE & SIDE PLATE
A	221226	PLATEN & BEARING ASM - EXTRA HARD	33	220507	STRIP - ADJUSTING BLOCK LOWER	75	24923	SPRING - SHIFT DRIVE GEAR
1	4159	TAPER PIN	34	220508	GIB - ADJUSTING BLOCK LOWER	76	25747	SCREW - PAPER GUIDE MTG BRACKET
2	191148	BEARING - PLATEN SHAFT	35	220512	SCREW - ET	77	30581	SCREW - JONES PLUG MTG HANDWHEEL
3	*	COUPLING - PLATEN DRIVE	36	220513	GIB - ADJUSTING BLOCK UPPER	78	135966	WASHER - SHIFT DRIVE HANDWHEEL
4	*	GEAR - PLATEN	37	220514	SHIM - ADJUSTING BLOCK STRIP (.002)	79	14828	WASHER - SHIFT DRIVE HANDWHL SPR
5	221628	CONTAINER - PLATEN	38	220515	SHIM - CARRIAGE SLIDE BLOCK (.002)	80	160960	WASHER - ECCENTRIC SHIFT
B	249398	PIN ASM - BRACKET ADJUSTING ARM &	39	220550	SCREW - KNOB LEVER PIN	81	179297	SCREW - VERNIER ADJUSTING ARM
C	220585	PLATE ASM - PAPER GUIDE & SIDE	40	221010	STUD - IDLER GEAR	82	192298	SCREW - JONES PLUG MOUNTING
C	220595	DAMPER - FELT	41	221011	GEAR - ECCENTRIC SHAFT DRIVE	83	192298	COVER - PLATEN BALG BEARING
D	249397	ARM ASM - VERNIER ADJUSTMENT	42	221012	BRACKET - FORE & AFT ADJUSTING	84	197261	SCREW - BAL BEARING COVER
E	212218	SHAFT ASM - PRESSURE ROLL CAM	43	221014	SPACER - FORE & AFT SHIFT	85	197677	DETENT - BEARING COVER
F	220583	BRACKET ASM - FORM CONTROL	44	221723	SCREW - ADJUSTING KNOB	86	212144	GEAR - HANDWHEEL IDLER
G	220592	SCREW ASM - CARRIAGE SHIFT	45	221724	SCREW - FORE & AFT BLOCK	87	212144	STUD - HANDWHEEL IDLER GEAR
H	207764	CARRIAGE BASE ASM - STANDARD	46	249440	BLOCK - ADJUSTING SLIDE STRIP (.001)	88	212151	STUD - HANDWHEEL
	3960	NUT - ADJUSTING SCREW	47	257100	SHIM - CARRIAGE SLIDE BLOCK (.001)	89	212151	GEAR - SHIFT DRIVE IDLER
	4564	NUT - IDLER GEAR STUD	48	221007	SHAFT ASM - FORE & AFT KNOB G	90	212337	NUT - VERNIER CLAMP
	11598	NUT - SET SCREW LOCK	H1	221007	SHAFT ASM - ECCENTRIC	91	220517	LUG - SHIFT SCREW
	100027	SPRING - ADJUSTING KNOB LEVER	H2	221006	BEARING ASM - SPLIT BEARING	92	220526	PLUG - 30 POSITION
	104763	SCREW - SHIFT SCREW LUG	H3	220241	SCREW - SPLIT BEARING	93	220562	STUD - LEFT COVER MOUNTING
	120211	SCREW - ADJUSTING BLOCK STRIP		104763	SCREW - SPLIT BEARING	94	220562	STUD - LEFT FRONT COVER MTG
	120211	SCREW - CARRIAGE SLIDE BLOCK	J	221191	TABLE ASM - FRONT PAPER	95	220562	HANDWHEEL - SHIFT
	120211	SCREW - ADJUSTING BRACKET MOUNTING	K	221261	ARM ASM - SHIFT DRIVE GEAR DETENT	96	220570	SHAFT - PAPER LEVER
	151720	SCREW - ECCENTRIC SHAFT COLLAR				97	220571	SHAFT - PAPER PAPER
	160732	COLLAR - ECCENTRIC SHAFT				98	220590	GUIDE - FRONT PAPER
						99	220590	BRACKET - JONES PLUG MOUNTING
						100	221189	RETAINER - JONES PLUG
						101	221189	STUD - DETENT ARM SPR MTG
						102	221265	SCREW - PRESSURE RELEASE ARM STOP
						103	221297	SCREW - VERNIER CLAMP
						104	257135	CLIP - SPRING
						105	257700	ARM - PRESSURE RELEASE
						106	212150	SPACER - PRESSURE RELEASE ARM
						107	120571	CLIP - PRESSURE RELEASE ARM SPRING
						108	60488	

* NOT RECOMMENDED FOR FIELD REPLACEMENT

PLATEN, SHIFT MECH. & CARRIAGE VIEW

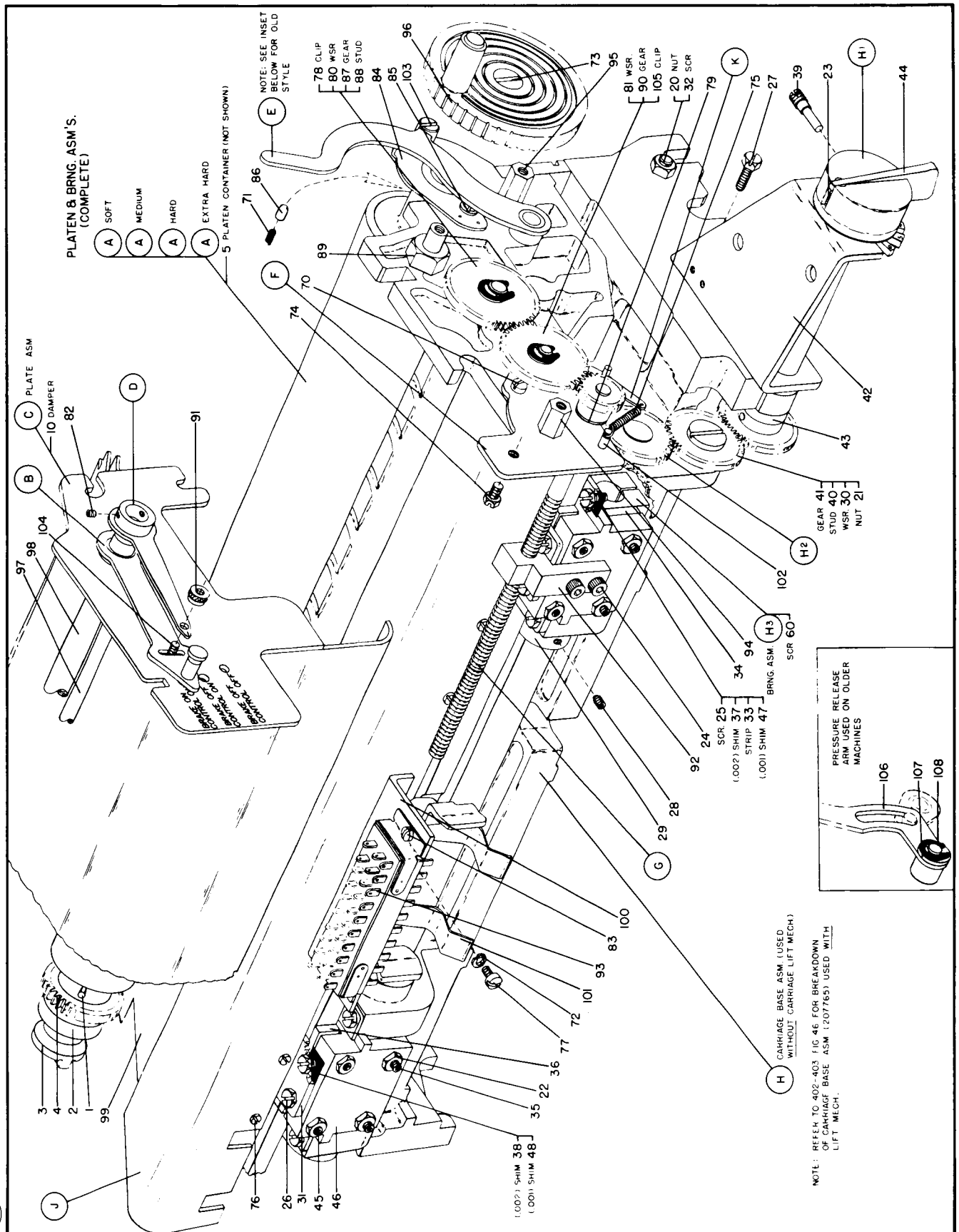
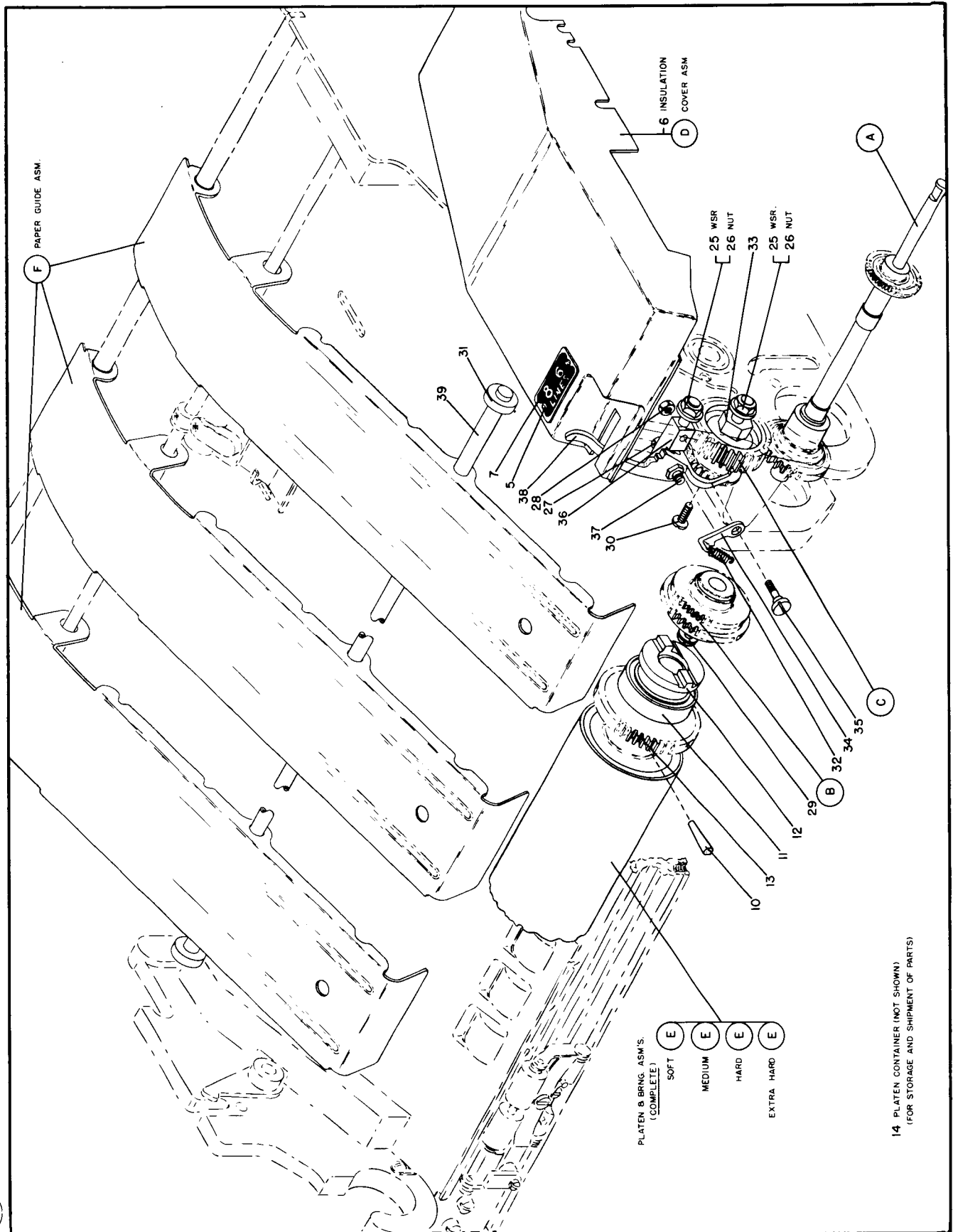


FIG. 923-5

REF. PART NO.	DESCRIPTION	REF. PART NO.	DESCRIPTION	REF. PART NO.	DESCRIPTION	
A 219997	SHAFT ASM - PLATEN DRIVE GEAR	E 221225	PLATEN & BEARING ASM - HARD	28 7341	NUT - GEAR SHIFT DETENT PAWL	
B 221194	GEAR ASM - PLATEN DRIVE	E 221226	PLATEN & BEARING ASM - EXTRA HARD	29 30838	SCREW - PLATEN DRIVE SHAFT	
C 221203	GEAR ASM - SHIFT	10 4159	PIN - TAPER	30 30838	SCREW - GEAR SHIFT	
D 221211	COVER ASM - DRIVE AUXILIARY	11 191148	BEARING - PLATEN SHAFT	31 65739	COLLAR - SUPPT BAR (RUBBER)	
5 60937	SCREW - DRIVE	12 *	COUPLING - PLATEN SHAFT	32 151135	SPRING - GEAR SHIFT DETENT	
6 220567	INSULATION - COVER	13 *	GEAR - PLATEN	33 221196	STUD - SHIFT GEAR	
7 221214	NAME PLATE - 6 TO 8 LINE	14 221628	CONTAINER - PLATEN	34 221199	PAWL - GEAR SHIFT DETENT	
E 221219	PLATEN & BEARING ASM - MEDIUM	F 230568	GUIDE ASSEMBLY - PAPER	35 221200	STUD - GEAR SHIFT DETENT PAWL	
E 221224	PLATEN & BEARING ASM - SOFT	PARTS NOT INCLUDED WITH ASSEMBLIES			36 221201	STUD - GEAR SHIFT MOUNTING
		25 3550	WASHER - GEAR SHIFT STUD	37 221202	STUD - GEAR SHIFT ARM	
		26 3960	NUT - GEAR SHIFT STUD	38 221215	ARM - GEAR SHIFT	
		27 7341	NUT - GEAR SHIFT ARM STUD	39 221515	BAR - PAPER GUIDE FRONT SUPPORT	
* NOT RECOMMENDED FOR FIELD REPLACEMENT						

6 TO 8 LINE DRIVE GROUP & PAPER GUIDES



FEB 14, 1958

FIG. 923-6

FIG. 923-7

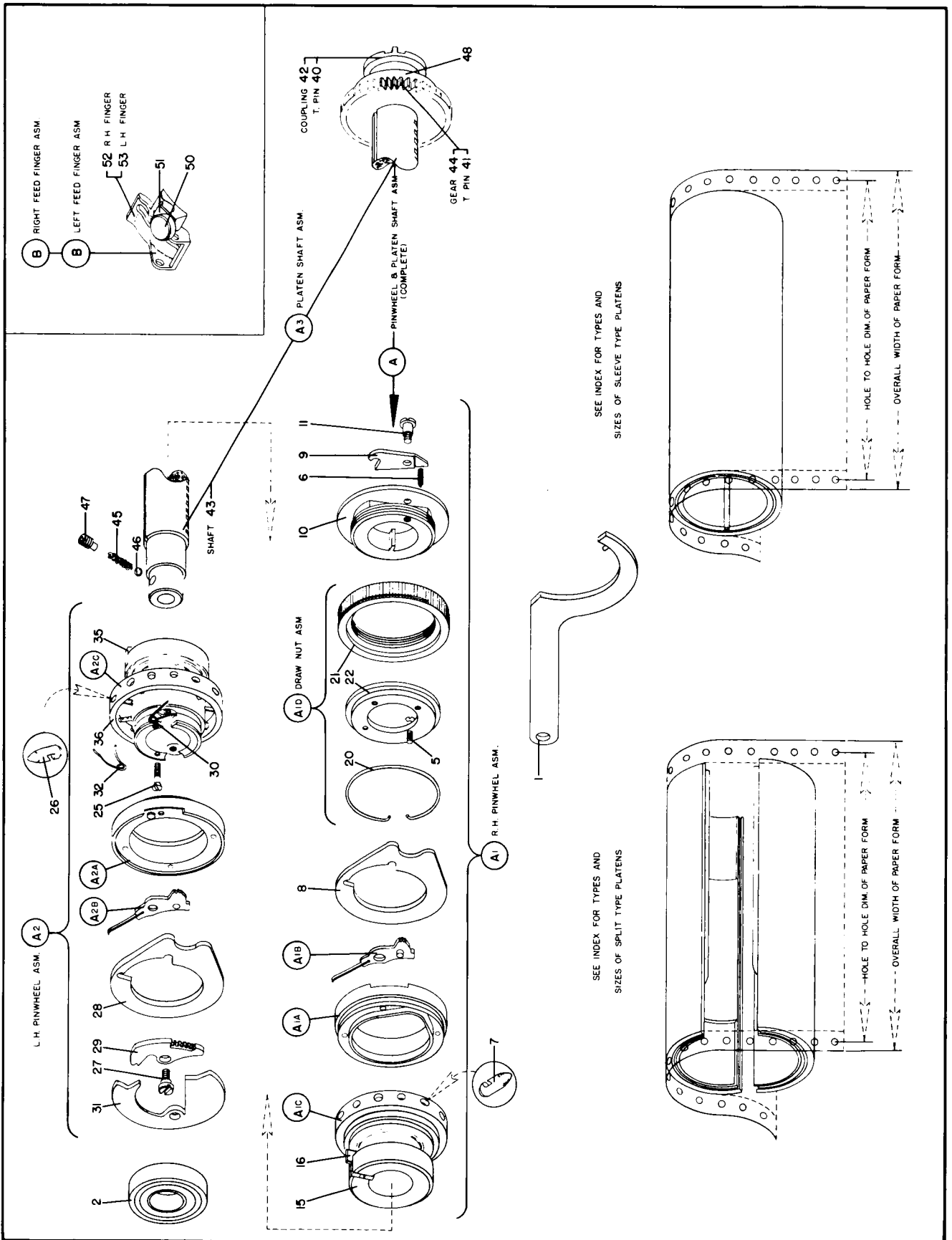
FEB. 14, 1958

REF. PART NO.	DESCRIPTION	REF. PART NO.	DESCRIPTION	REF. PART NO.	DESCRIPTION
A	221350 PINWHEEL & PLATEN SHAFT ASM	20	221381 RING - RETAINING	A3	221391 SHAFT ASSEMBLY - PLATEN
1	221244 WRENCH - SPANNER	21	221384 NUT - SUB ASM DRAW	40	4159 PIN - PLATEN COUPLING TAPER
2	249084 BEARING - PLATEN SHAFT BALL	22	221389 PLATE - PINWHEEL BODY END	41	151230 PIN - PLATEN GEAR TAPER
A1	221376 PINWHEEL ASM - R. H.	A2	221377 PINWHEEL ASM - L. H.	42	* COUPLING - PLATEN DRIVE
5	221136 SCREW - LOCK PLATE	25	221136 SCREW - LOCK PLATE	43	* SHAFT - PLATEN
6	221242 SPRING - LATCH	26	221353 PIN - PINWHEEL	44	* GEAR - PLATEN SHAFT
7	221353 PIN - PINWHEEL	27	221355 SCREW - LATCH ARM	45	221394 SPRING - BALL
8	221359 FORK - PINWHEEL	28	221359 FORK - PINWHEEL	46	221395 RETAINER - BALL
9	221383 LATCH - DRAW NUT	29	221615 PAWL - PINWHEEL LATCH	47	221541 SCREW - DOMEL
10	221387 SLEEVE - DRAW NUT	30	221616 SPRING - PAWL LATCH	48	249084 BEARING - PLATEN SHAFT BALL
11	221388 SCREW - LATCH	31	221617 LATCH - PINWHEEL		
A1A	221365 CAM ASSEMBLY - R.H.	32	221618 SPRING - LATCH	B	221605 FEED FINGER ASM - R.H.
A1B	221371 PAWL ASSEMBLY - R.H.	A2A	221364 CAM ASSEMBLY - L. H.	B	221607 FEED FINGER ASM - L.H.
A1C	221378 BODY ASM - PINWHEEL RIGHT	A2B	221372 PAWL ASSEMBLY - INDEXING	50	130038 SCREW - FEED FINGER STUD
15	221358 BODY - PINWHEEL R.H.	A2C	221379 BODY ASM - PINWHEEL	51	221578 CLIP - FEED FINGER
16	221375 KEY - PINWHEEL RIGHT HAND	35	221356 KEY - PINWHEEL L.H.	52	221604 FINGER - RIGHT HAND
A1D	221390 DRAW NUT ASSEMBLY	36	221367 BODY - PINWHEEL L.H.	53	221606 FINGER - LEFT HAND

Sector and Shipping Container			Cylindrical	
Over-all	Hole-to-Hole		Split	
Form Width	Dimension		Sector	Assem.
4-3/4"	4-1/4"	Hard	221051	221443
4-3/4"	4-1/4"	Medium	221051	221427
5-3/4"	5-1/4"	Hard	221052	221444
5-3/4"	5-1/4"	Medium	221052	221428
6-1/2"	6"	Hard	221053	221445
6-1/2"	6"	Medium	221053	221429
8"	7-1/2"	Hard	221054	221446
8"	7-1/2"	Medium	221054	221430
8-1/2"	8"	Hard	221055	221447
8-1/2"	8"	Medium	221055	221431
9-1/2"	9-3/8"	Hard	221056	221448
9-1/2"	9-3/8"	Medium	221056	221432
10-5/8"	10-1/8"	Hard	221057	221449
10-5/8"	10-1/8"	Medium	221057	221433
11"	10-1/2"	Hard	221058	221450
11"	10-1/2"	Medium	221058	221434
11-3/4"	11-1/4"	Hard	221059	221451
11-3/4"	11-1/4"	Medium	221059	221435
12-27/32"	12-11/32"	Hard	221060	221452
12-27/32"	12-11/32"	Medium	221060	221436
13-5/8"	13-1/8"	Hard	221061	221453
13-5/8"	13-1/8"	Medium	221061	221437
14-7/8"	14-3/8"	Hard	221062	221454
14-7/8"	14-3/8"	Medium	221062	221438
15-17/32"	15"	Hard	221063	221455
15-17/32"	15"	Medium	221063	221439
16"	15-1/2"	Hard	221064	221456
16"	15-1/2"	Medium	221064	221440
17-25/32"	17-9/32"	Hard	221065	221457
17-25/32"	17-9/32"	Medium	221065	221441
18-15/16"	18-7/16"	Hard	221066	221458
18-15/16"	18-7/16"	Medium	221066	221442

* NOT RECOMMENDED FOR FIELD REPLACEMENT

PINFEED PLATEN GROUP 221168



FEB. 14, 1958

FIG. 923-7

REF. PART NO.	DESCRIPTION	REF. PART NO.	DESCRIPTION	REF. PART NO.	DESCRIPTION
A	221004 FORM FEED ASM - (COMPLETE)	18 197636 COVER - PIN FEED GEAR	38 197662 SHIM - PIN FEED (AS REQ.)		
1	2650 SCREW - BEARING COVER	19 197656 PIN - FORM FEED SHAFT TAPER	A1A 189947 RETAINER ASSEMBLY - PIN		
2	7341 NUT - PAPER GUIDE STUD	20 197946 SCREW - BRACKET SUPPORT	40 23854 SCREW		
3	11598 NUT - IDLER GEAR STUD	21 197946 SCREW - CLAMP HOLDER	41 76457 PIN		
4	25242 BEARING - PIN WHEEL SHAFT	22 197947 WASHER - CLAMP HOLDER	A1B 189984 HOUSING ASSEMBLY - BEARING		
5	28441 PIN - DRIVE GEAR TAPER	23 197949 STUD - SPRING	A2 197624 GEAR ASM - PIN FEED IDLER		
6	45690 WASHER - IDLER GEAR STUD	24 197964 KEY - PIN WHEEL BRKT .0935 THICK	A3 197630 GUIDE ASM - RIGHT PAPER		
7	75533 SCREW - DRIVE GEAR SET	25 197967 SUPPORT - PIN WHEEL BRACKET	A4 197632 GUIDE ASM - LEFT PAPER		
8	105047 LOCKWASHER - PAPER GUIDE	26 197993 STUD - PAPER GUIDE	A5 197637 PLATE ASM - RIGHT SIDE		
9	129701 KEY - .0925 THICK PIN WHEEL	27 197996 SHIM - PIN WHEEL ASM	A6 197638 PLATE ASM - LEFT SIDE		
10	129703 CLAMP - PIN WHEEL	28 212228 SHAFT - FORM FEED FRONT	A7 197664 BRACKET ASM - LEFT PIN WHEEL		
11	129704 HOLDER - PIN WHEEL CLAMP	29 212229 SHAFT - PIN WHEEL	A8 197666 BRACKET ASM - RIGHT PIN WHEEL		
12	129709 SCREW - PIN WHEEL CLAMP	30 212230 ROD - FORM FEED TIE REAR	A9 221213 DISC ASM - PAPER SUPPORT		
13	141332 SPRING - PAPER GUIDE	A1 189948 WHEEL ASSEMBLY - PIN	B 221109 BAR ASM - PIN FEED IDLER		
14	189985 COVER - BALL BEARING	35 127585 BEARING	45 221108 BAR - PAPER GUIDE		
15	197622 STUD - PIN FEED IDLER GEAR	36 129676 PIN - PAPER FEED	46 11118 SCREW - PAPER GUIDE		
16	197625 GEAR - PIN FEED DRIVE	37 189945 NUT - PIN RETAINER	47 27073 NUT - PAPER GUIDE		
17	197633 SCREW - GEAR COVER				

FORM FEED ASM.



FEB 14, 1958

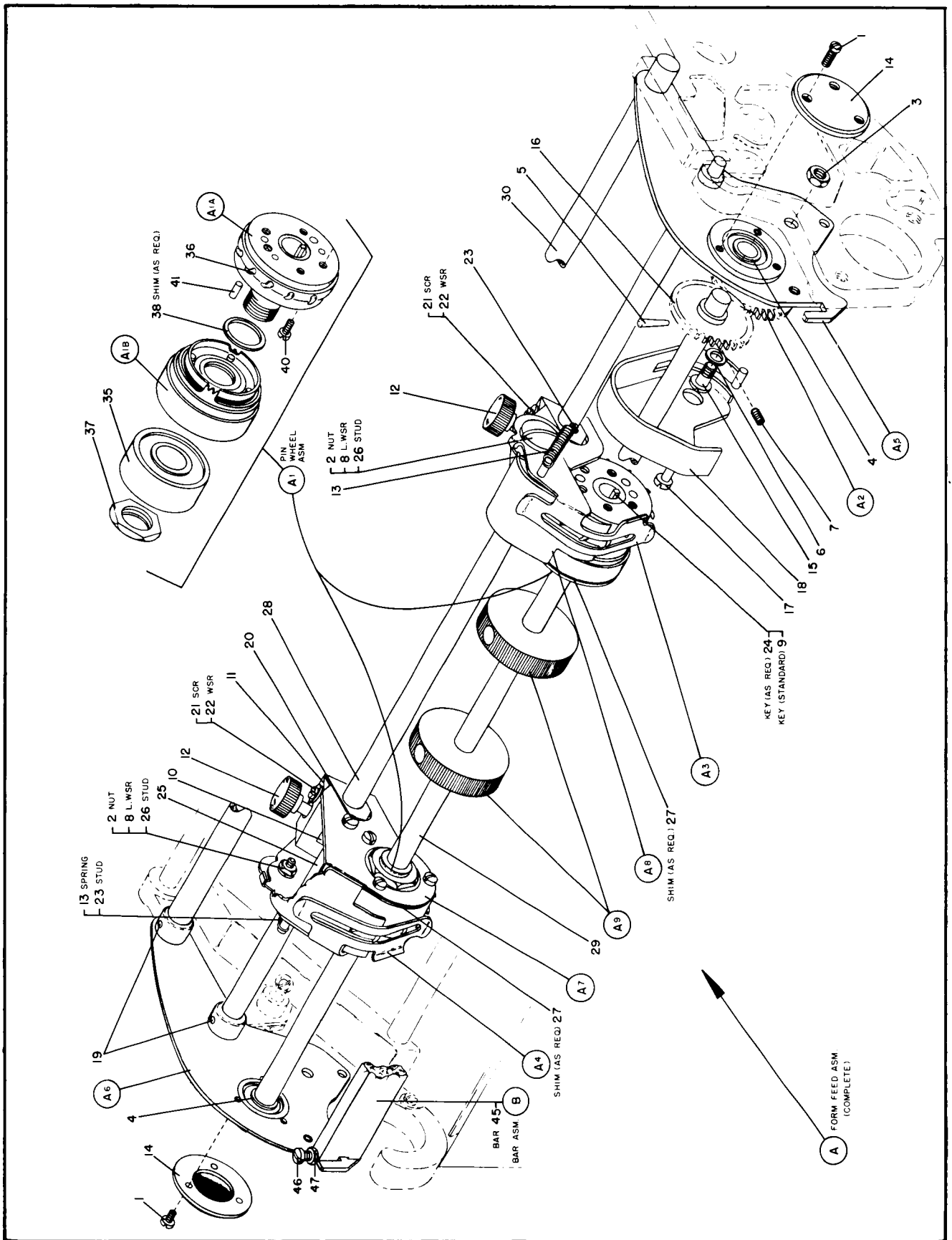
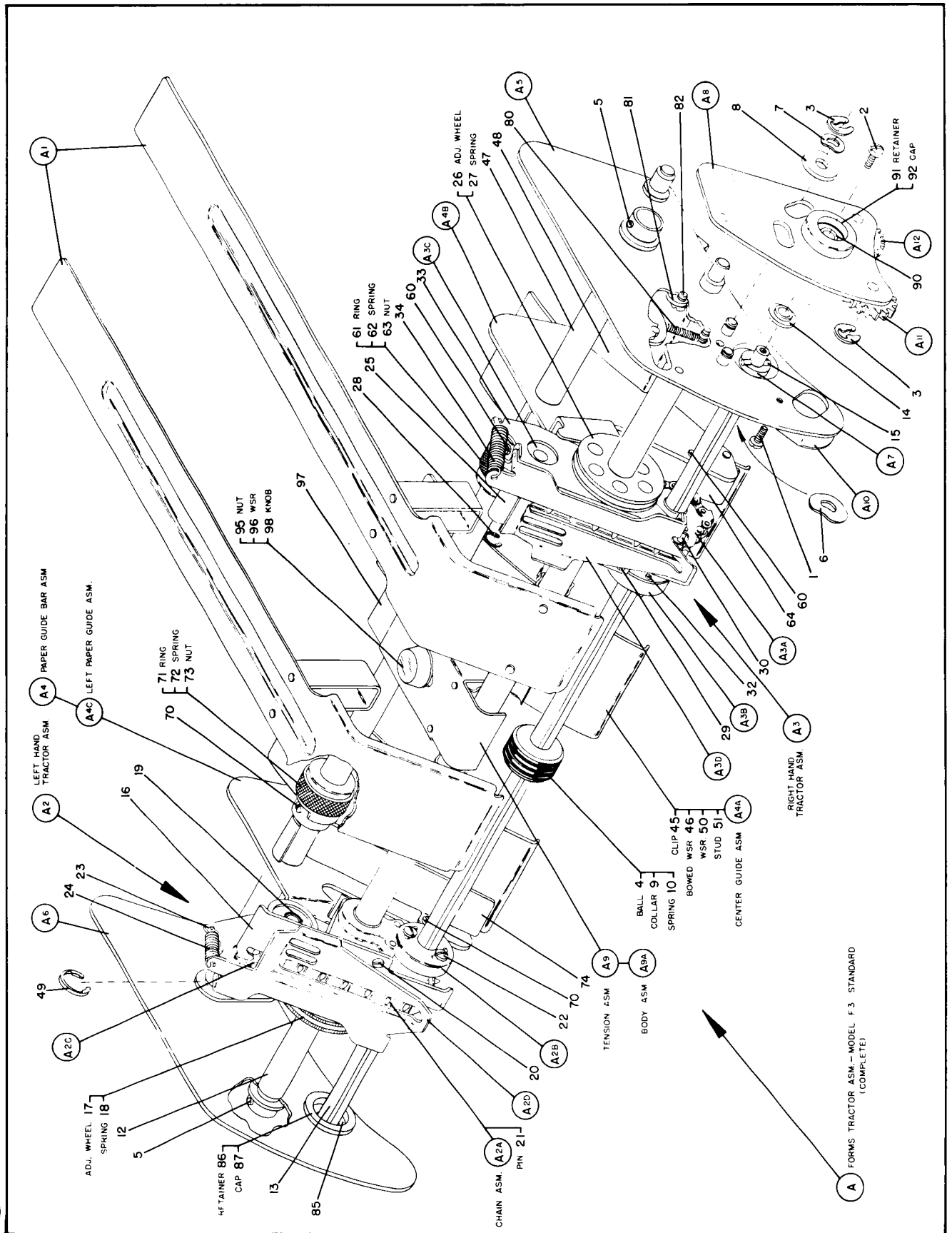


FIG. 923-8

REF. PART NO.	DESCRIPTION	REF. PART NO.	DESCRIPTION	REF. PART NO.	DESCRIPTION
A	FORMS TRACTOR ASM - MODEL F3 STD.	A2D	250575 PLATE ASM - LEFT PRESSURE	64	256712 FUNNEL - RIGHT
1	SCREW - GEAR GUARD	A3	250502 TRACTOR ASSEMBLY - RIGHT HAND	A4C	256708 GUIDE ASM - LEFT PAPER
2	SCREW - BEARING RETAINING	25	236506 PLATE - RIGHT SLIDE	70	38259 SCREW
3	CLIP - SPRING	26	236511 WHEEL - TRACTOR ADJUSTING	71	236473 RING - LOCK NUT
4	BALL - PAPER SUPPORT COLLAR	27	236514 SPRING - CENTER SLEEVE	72	236474 SPRING - LOCK NUT
5	PIN - TAPER	28	236524 RING - RETAINING	73	236478 NUT - LOCK
6	WASHER - DETENT	29	236529 SCREW - SELF TAPPING	74	256713 FUNNEL - LEFT
7	WASHER - BOWED	30	236531 PIN - CHAIN ASM MASTER	A5	256726 FRAME ASM - CAM & RIGHT
8	WASHER - FLAT	32	236550 SCREW - DRIVE PLATE ASM MTG	80	250518 STOP - ECCENTRIC
9	COLLAR - PAPER SUPPORT	33	250514 PLATE - HINGE BRACKET - RIGHT	81	250524 STOP - ECCENTRIC
10	SPRING - PAPER SUPPORT COLLAR	34	250580 SPRING - PRESSURE PLATE	A6	256731 BEARING
12	ROD - TRACTOR GUIDE	A3A	236538 CHAIN ASSEMBLY	82	250525 BEARING ASM - BEARING & LEFT
13	ROD - TRACTOR DRIVE	A3B	236544 PLATE ASSEMBLY - DRIVE	85	110129 RETAINER - BEARING
14	SPACER - DRIVE ROD	A3C	250576 SPROCKET ASM - DRIVEN	86	236428 CAP - BEARING RETAINING
15	PIN - ROLL	A3D	250575 PLATE ASM - RIGHT PRESSURE	87	236429 CAP ASSEMBLY - DRIVE
A1	236466 GUIDE ASSEMBLY - PAPER	A4	256701 GUIDE BAR ASM - PAPER	A7	256735 BEARING ASSEMBLY - GEAR
A2	250501 TRACTOR ASSEMBLY - LEFT HAND	45	60489 CLIP - SPRING	A8	256737 RETAINER - BEARING
16	236505 PLATE - LEFT SIDE	46	236469 WASHER - BOWED	90	110129 RETAINER - BEARING
17	236511 WHEEL - TRACTOR ADJUSTING	47	256714 ROD - PAPER GUIDE	91	236428 CAP - BEARING RETAINER
18	236514 SPRING - CENTER SLEEVE	48	256716 BAR - PAPER GUIDE	92	236429 CAP ASSEMBLY - DRIVE
19	236524 RING - RETAINING	49	256759 CLIP - SPRING	A9	256740 NUT - ELASTIC STOP
20	236529 SCREW - SELF TAPPING	50	256760 WASHER - CENTER TAPER GUIDE	95	117281 WASHER
21	236531 PIN - CHAIN ASM MASTER	51	256761 STUD - CENTER PAPER GUIDE	96	236585 SPRING - PAPER TENSION
22	236550 SCREW - DRIVE PLATE ASM MTG	A4A	256702 GUIDE ASM - PAPER CENTER	97	256744 KNOB - PAPER TENSION
23	250511 PLATE - HINGE BRACKET - LEFT	A4B	256704 GUIDE ASM - PAPER RIGHT	98	256745 BODY ASM - PAPER TENSION
24	250580 SPRING - PRESSURE PLATE	60	38259 RING - LOCK NUT	99	256741 GUARD ASSEMBLY - GEAR
A2A	236538 CHAIN ASSEMBLY	61	236473 SPRING - LOCK NUT	A9A	256746 GEAR ASM - IDLER FRONT
A2B	236544 PLATE ASSEMBLY - DRIVE	62	236474 NUT - LOCK (L.H. THREAD)	A10	256749 GEAR ASM - IDLER REAR
A2C	236545 SPROCKET ASM - DRIVEN	63	236477	A11	256751

FORMS TRACTOR-MODEL F-3



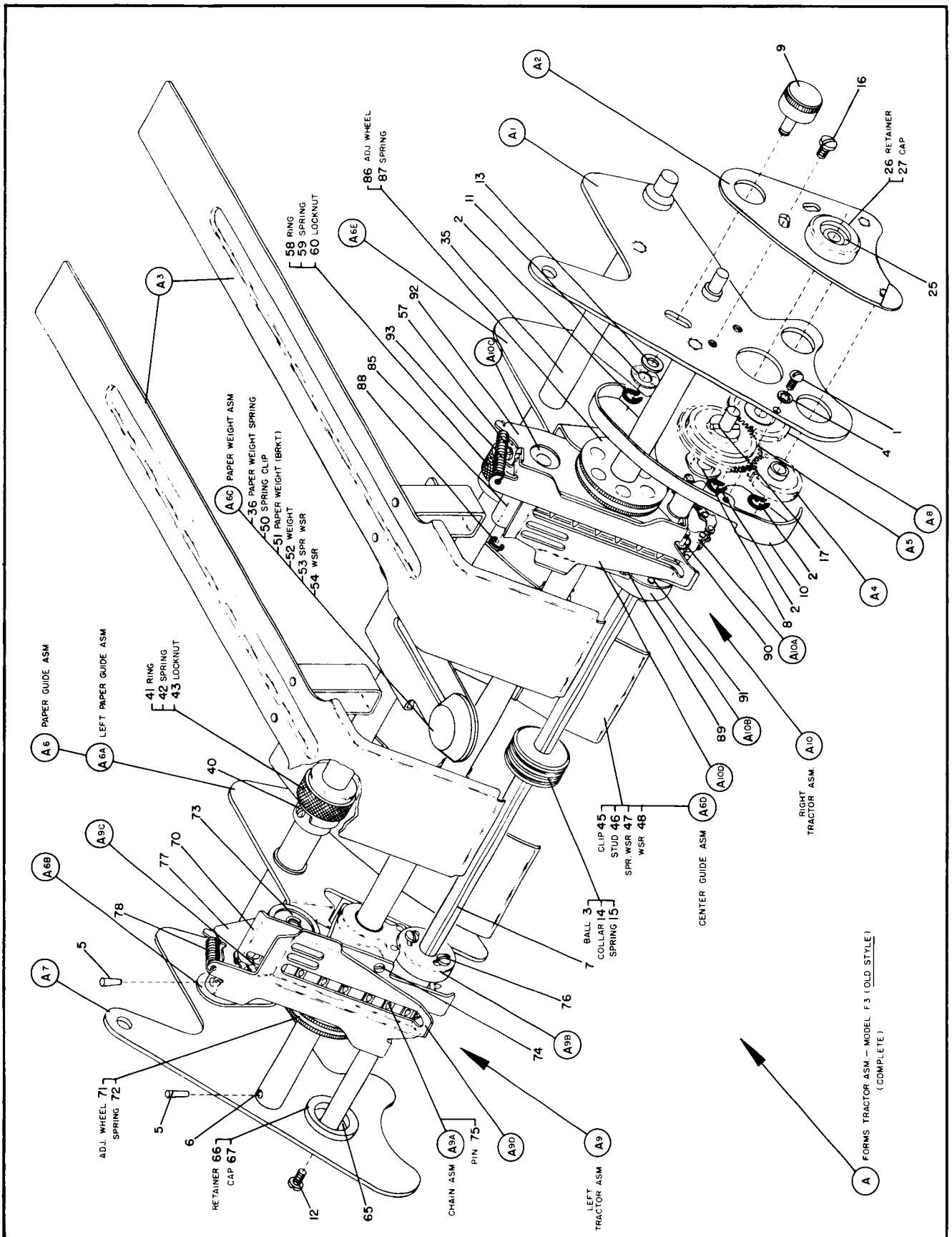
FEB 14, 1958

FIG. 923-9

REF.	PART NO.	DESCRIPTION	REF.	PART NO.	DESCRIPTION	REF.	PART NO.	DESCRIPTION
A	236500	FORMS TRACTOR ASM - MODEL F3						
1	52603	SCREW - GUARD MOUNTING						
2	60489	CLIP - SPRING	42	236474	SPRING - LOCKNUT	71	236511	WHEEL - TRACTOR ADJUSTING
3	82125	BALL	43	236478	LOCKNUT	72	236514	SPRING - CENTER SLEEVE
4	150209	LOCKWASHER - SHAKEPROOF	A6B	236464	BAR ASM - PAPER GUIDE	73	236524	RING - RETAINING
5	197656	PIN - TAPER	45	60489	CLIP - SPRING	74	236529	SCREW - SELF TAPPING
6	236432	ROD - TRACTOR GUIDE	46	236455	STUD - HOLD DOWN	75	236531	PIN - CHAIN ASM MASTER
7	236434	ROD - TRACTOR DRIVE	47	236469	WASHER - SPRING	76	236550	SCREW - DRIVE PLATE ASM MTG
8	236437	WASHER - DETENT	48	236480	WASHER	77	236511	PLATE HINGE BRACKET - L.H.
9	236446	ECCENTRIC	A6C	236479	WEIGHT ASSEMBLY - PAPER	78	236580	SPRING - PRESSURE PLATE
10	236461	GUARD	50	60489	CLIP - SPRING	A9A	236538	CHAIN ASSEMBLY
11	236469	WASHER - SPRING	51	236438	WEIGHT	A9B	236544	PLATE ASSEMBLY - DRIVE
12	236470	SCREW	52	236439	WEIGHT	A9C	236545	SPROCKET ASM - DRIVE
13	236480	WASHER	53	236469	WASHER	A9D	250575	TRACTOR ASM - LEFT PRESSURE
14	236481	COLLAR - FIBRE	54	236480	WASHER	A10	250502	TRACTOR ASM - RIGHT HAND
15	236485	SPRING - PAPER COLLAR	A6D	236486	GUIDE ASM - CENTER PAPER		236506	PLATE - RIGHT SLIDE
16	236849	SCREW	A6E	236489	GUIDE ASM - RIGHT PAPER	85	236511	WHEEL - TRACTOR ADJUSTING
17	376265	PIN - DETENT	57	38259	SCREW	86	236514	SPRING - CENTER WHEEL
A1	236436	FRAME & STUD ASM - R.H. END	58	236473	RING - LOCKNUT	87	236524	RING - RETAINING
A2	236465	PLATE ASSEMBLY - GEAR	59	236477	LOCKNUT - RIGHT (L.H. THREAD)	88	236529	SCREW - SELF TAPPING
25	110129	BEARING - BALL	60	236493	FRAME ASM - LEFT END	89	236531	PIN - CHAIN ASM MASTER
26	236428	RETAINER - BEARING	65	119129	BEARING - BALL	90	236550	SCREW - DRIVE PLATE ASM MTG
27	236429	CAP - BEARING RETAINER	66	236428	RETAINER - BEARING	91	236514	PLATE HINGE BRKT - R.H.
A3	236466	PLATE ASSEMBLY - REFOLD	67	236429	CAP - BEARING RETAINER	92	236580	SPRING - PRESSURE PLATE
A4	236467	GEAR ASM - FRONT IDLER	A8	236499	GEAR ASM - REAR IDLER	93	236538	CHAIN ASSEMBLY
A5	236490	GEAR ASM - DOUBLE DRIVE	A9	250501	TRACTOR ASM - LEFT HAND	A10A	236544	PLATE ASSEMBLY - DRIVE
A6	236492	GUIDE ASSEMBLY - PAPER		236505	PLATE - LEFT SLIDE	A10B	236545	SPROCKET ASM - DRIVE
35	236433	ROD - PAPER GUIDE	70	236505		A10C		
36	236440	SPRING - PAPER WEIGHT						
A6A	236443	GUIDE ASM - LEFT PAPER						
40	38259	SCREW						
41	236473	RING - LOCKNUT						

FIG. 923-10

FORMS TRACTOR-MODEL F-3 (OLD STYLE)



FEB 14, 195

FIG. 923-10

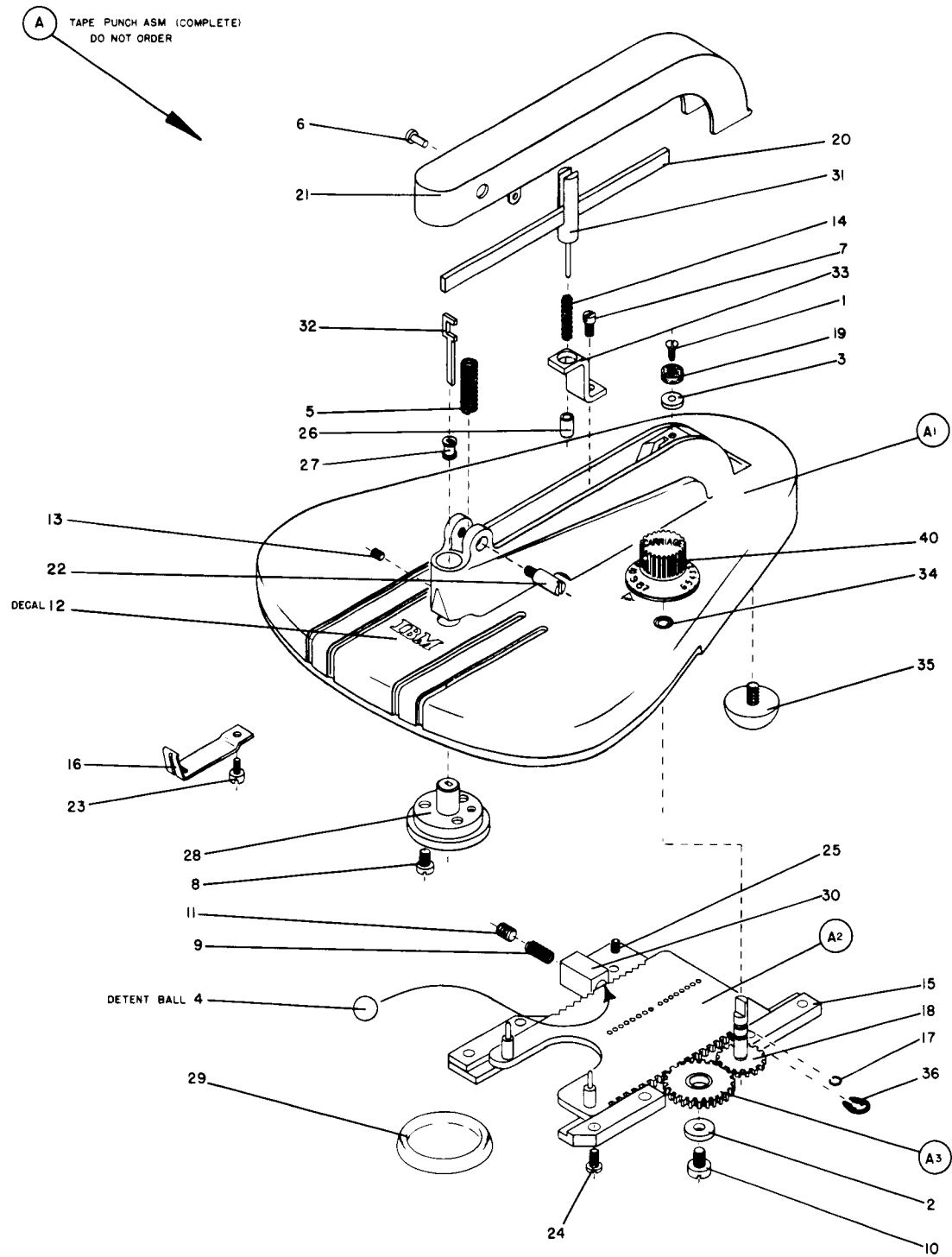
REF.	PART NO.	DESCRIPTION	REF.	PART NO.	DESCRIPTION
A	105800	STAND ASM - FORM FEED	18	221965	PLATE - TOP
1	266	SCREW - TIE BAR MOUNTING	19	221966	NUT - CLAMP
2	3696	NUT - TOP PLATE MOUNTING	20	221967	ADAPTER - CLAMP
3	11598	NUT - TIE BAR MOUNTING	21	221968	COLLET - CLAMP
4	38579	SCREW - BUMPER MOUNTING	22	223497	BRACKET - TRAY RIGHT HAND
5	111954	SCREW - TRAY ADJUSTING	23	223498	TRAY - FORMS
6	122795	PIN - TRAY MOUNTING	24	228657	BUMPER - TRAY
7	123780	SCREW - ADAPTER CLAMP	25	255992	SCREW - TRAY ADJUSTING
8	184522	NUT - WING	A1	210450	KNOB ASM - TRAY ADJUSTING
9	207736	LEG	B	230565	BAR ASM - REAR GUIDE
10	207737	BAR - TIE	C	230571	GUIDE ASM - REAR PAPER
11	208572	DECAL - I B M			PARTS NOT INCLUDED WITH ASSEMBLIES
12	210408	STUD - FRICTION CLAMP	30	15789	SCREW - THUMB
13	210410	CLAMP - FRICTION	31	230564	BLOCK - CLAMPING
14	210425	BRACKET - FRICTION CLAMP			
15	210443	SHOE - TRAY BRACKET			
16	210444	BRACKET - LEFT TRAY			
17	210449	SUPPORT - TOP PLATE			

FIG. 923-II



PAGE 24

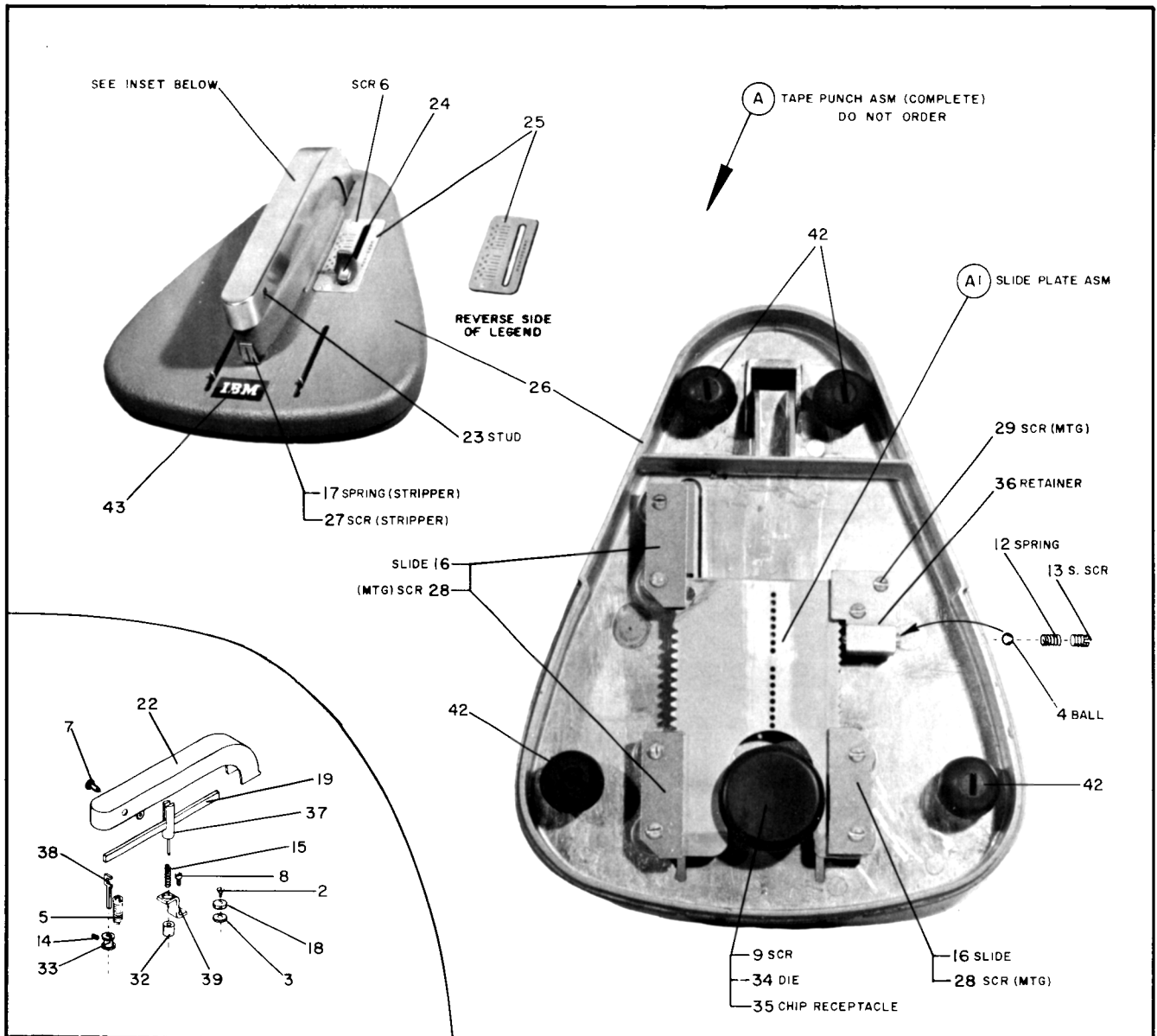
TAPE PUNCH ASM



FEB. 14, 1958

FIG. 923-12

TAPE PUNCH ASM (NEW STYLE)



REF.	PART NO.	DESCRIPTION	REF.	PART NO.	DESCRIPTION
A	120910	PUNCH ASM - CARRIAGE TAPE (DO NOT ORDER)	24	192723	INDICATOR - SLIDE
2	194	SCREW - LEVER RETAINING	25	192724	LEGEND - TAPE PUNCH
3	4085	WASHER - LEVER RETAINING	26	192726	CASTING - BASE
4	4889	BALL - DETENT	27	196298	SCREW - STRIPPER SPRING MTG.
5	14708	SPRING - PAPER PUNCH	28	196698	SCREW - SLIDE GUIDE MTG.
6	15887	SCREW - LEGEND MTG.	29	196698	SCREW - DETENT RETAINER MTG.
7	24739	STUD - LEVER PIVOT	32	197923	BEARING - ALIGNING PIN
8	25530	SCREW - ALIGN PIN GUIDE MTG.	33	197924	GUIDE - PUNCH
9	25625	SCREW - PUNCH DIE MTG.	34	197928	DIE - TAPE PUNCH
12	37199	SPRING - DETENT PLUNGER	35	197929	RECEPTACLE - CHIP
13	59557	SCREW - DETENT SPRING SET	36	197930	RETAINER - DETENT
14	72670	SCREW - PUNCH GUIDE SET	37	197934	PIN - ALIGNING
15	102366	SPRING - ALIGNING PIN	38	197938	PUNCH - TAPE
16	120916	GUIDE - SLIDE	39	197942	GUIDE - ALIGNING PIN
17	120917	SPRING - STRIPPER	42	255561	BUTTON - TAPE PUNCH CUSHION
18	134824	WASHER - LEVER RETAINING SCREW (FELT)	43	438814	NAMEPLATE - IBM
19	179988	LEVER - PUNCH OPERATING	A1	192722	SLIDE PLATE ASM
22	180338	COVER - LEVER			
23	180341	STUD - COVER			
					NOT RECOMMENDED FOR FIELD REPLACEMENT



FEB. 14, 1958

FIG. 923-13





837

10

IBM 923 Printed in U.S.A. 124-0025-0

IBM

International Business Machines Corporation

Data Processing Division

112 East Post Road, White Plains, New York

620405MFW